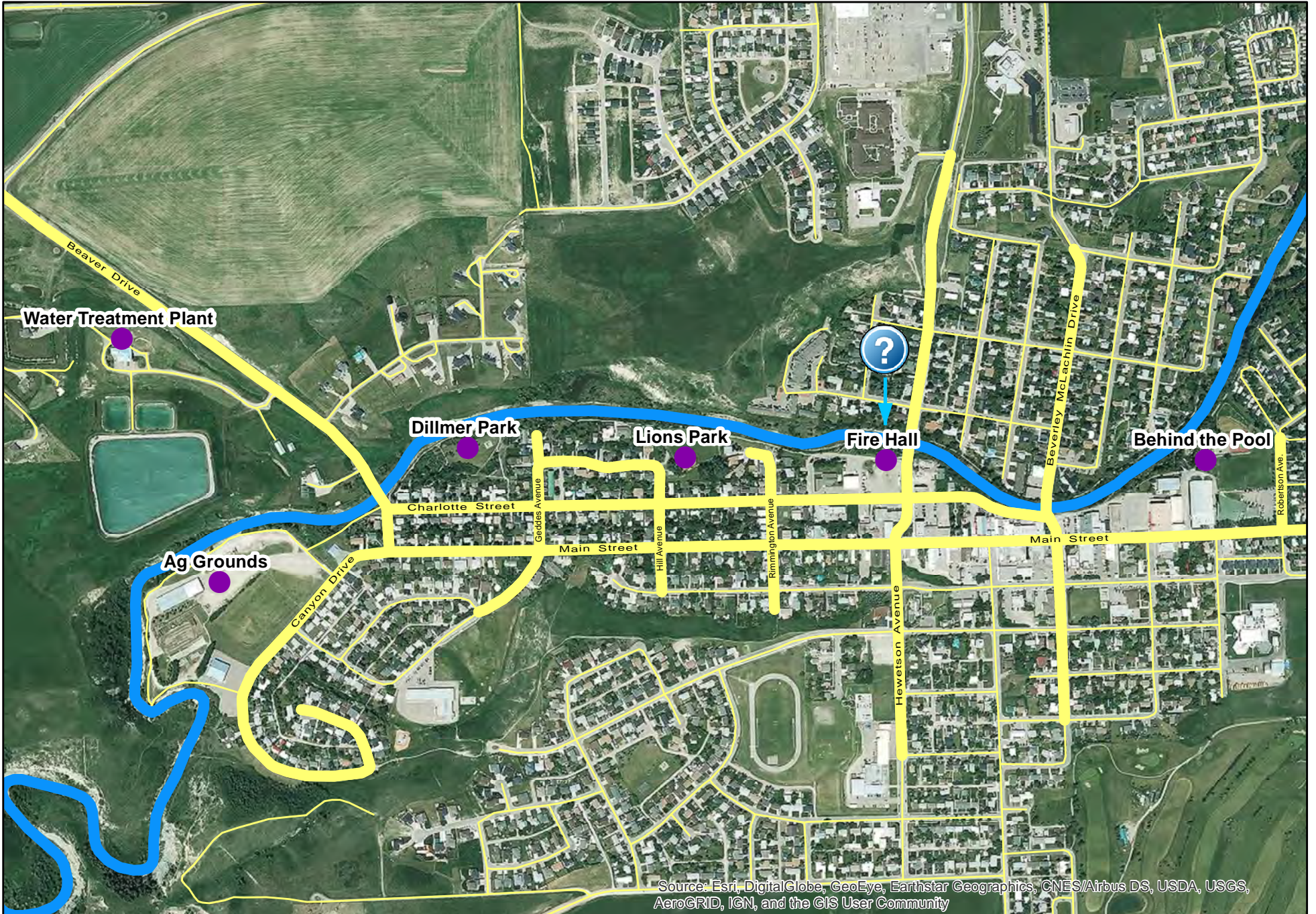
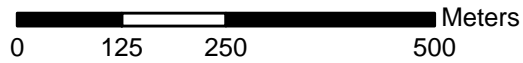


# Day on the Creek



Source: Esri, DigitalGlobe, GeoEye, Earthstar Geographics, CNES/Airbus DS, USDA, USGS, AeroGRID, IGN, and the GIS User Community



See reverse side for schedule.

# Day on the Creek - May 24, 2017 - SCHEDULE

Meeting Place	Learning Station Description	9:00 to 10:00	10:00 to 11:00	11:00 to 12:00	LUNCH	1:00 to 2:00	2:00 to 3:00
Behind the Pool	Local History Walk	CES Gr. 1A/B	CES Gr. 3A/3B	CES Gr. 2A/2B		MHHS Gr. 7A/B	PUBLIC
	Pool Chemical Math	MHHS Gr. 8 A/B Math				MHHS Math 30	MHHS Math 20
	Orienteering						MHHS Jr Hi Orienteering
Fire Hall Bridge	Aquatic Invertebrate Investigation	PUBLIC	SMS Gr. 5/6, 7/8	CES Gr. 5A/ 5B		PUBLIC	PUBLIC
	Riparian Health Monitoring	MHHS Biology 20	PUBLIC	MHHS Gr. 9A/9B		12:30 to 1:30pm SMS Biology 20	PUBLIC
Lions Park	Native Animals & Plants	CES Gr. 3A/ 3B	SMS Gr. 1 Eng	CES Gr. 1A/ 1B		CES Kindergarten	SMS Gr. 1 Fr
	Native Animals & Plants	CES Gr. 3A/ 3B	CES Gr. 2A/ 2B	SMS Kindergarten		CES Kindergarten	Rainford, Gr. 2
	Preschool Water Play	PUBLIC	PUBLIC	PUBLIC		PUBLIC	PUBLIC
Dillmer Park	Explore Bones & Hides	PUBLIC	PUBLIC	Public Demo		PUBLIC	PUBLIC
	Blackfoot Nation History & Culture	PUBLIC	SMS Gr. 4	MHHS Social 20		CES Gr. 4A/B	MHHS Anthro 30 MHHS Gr 7 Band
	Bear Discovery Trail	PUBLIC	PUBLIC	PUBLIC		PUBLIC	PUBLIC
Ag Grounds	Understanding Your Watershed	MHHS Gr. 7A/ 7B	PUBLIC	PUBLIC		MHHS Gr.9A/9B	MHHS Science 10/ MHHS Science 14
	Ecology Technology Demo		PUBLIC	PUBLIC		PUBLIC	
	Trees & Forest Ecology	PUBLIC	PUBLIC	11:30 to 12:30 SMS Gr. 5/6, 7/8		CES Gr. 6A/B	PUBLIC
	Solar Water Pumping Demo	PUBLIC	PUBLIC	PUBLIC		PUBLIC	PUBLIC
OFFSITE - Water Treatment Plant	Water Treatment						MHHS Gr 8 A/B & PUBLIC TOUR
OFFSITE - Oldman Dam	Hydroelectric Generation		MHHS Sr. High Mechanics			MHHS Sr High Mechanics	

### Learning Station Legend:

CES Gr 1A/1B	Scheduled Class Presentation
PUBLIC	Ongoing Demonstration - Open to Everyone
	Station Closed

### School Abbreviations:

CES - Canyon Elementary School  
 SMS - St Michael's School  
 MHHS - Matthew Halton High School

### For More Information:

Before the event: Nora at 403-627-1473 or 403-627-8256 (cell)  
 or nmanners@watertonbiosphere.com  
 During the event on May 24: Rhonda at 403-627-6597 (cell)